

HOSPITALITY

Technical Characteristics

DND SYSTEM

The DND System lets hotel guests communicate their wishes to the hotel staff distinctly and conveniently. The guests may not want to be disturbed or they may want the room to be tidied. To inform the staff, the guests only have to press the appropriate button on the actuator (102568) in their room. The LED display with bell push unit installed outside the room (102569) informs the hotel staff about the requirement made by the guest.

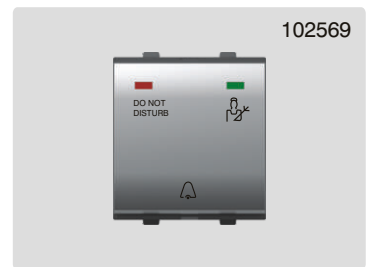
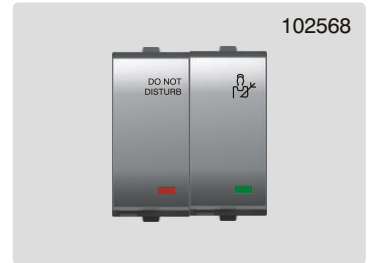
The system is designed to work in sets comprising:

A) Actuator 102568 (to be installed inside the room)

- It has two buttons that allow guests to choose from two different statuses:
 - i) Do Not Disturb (Red LED)
 - ii) Make My Room (Green LED)

B) Display unit with Bell Push 102569 (to be installed outside the room):

- It consists of two LEDs that shows the status as selected by the guests.
- Bell Push is also incorporated in the same unit.

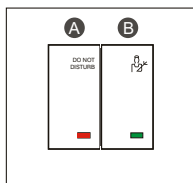


Technical Specifications

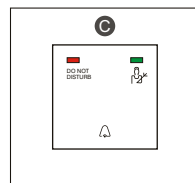
- Rated Voltage 240V~ 50-60 Hz.
- High efficiency LED.
- Protection IP20.
- Size: 2 Modules.

Wiring Diagram

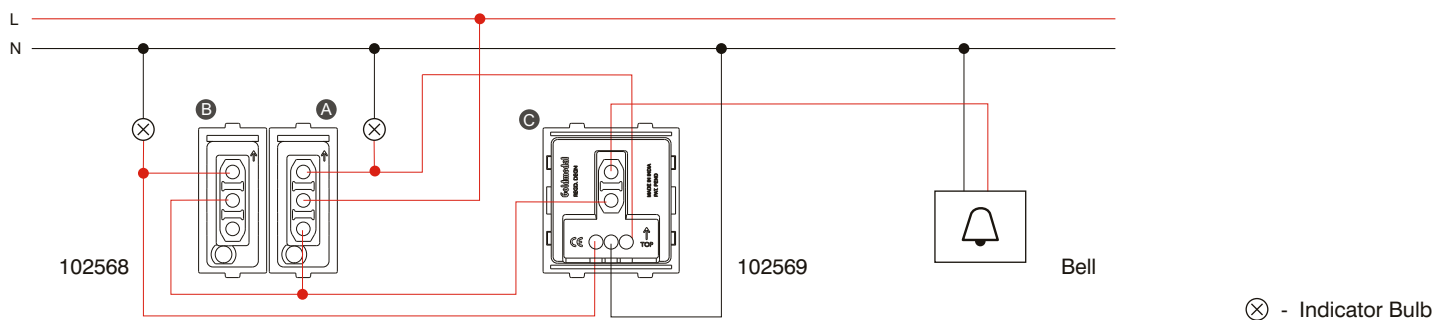
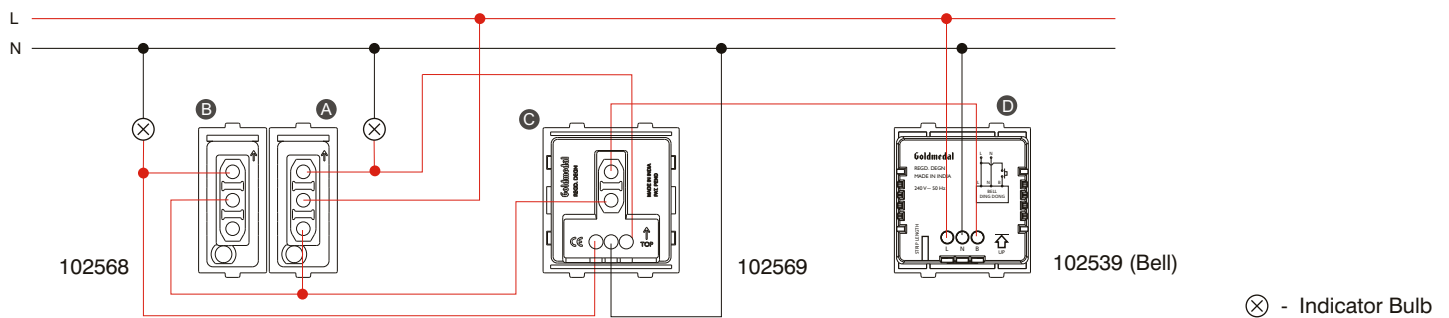
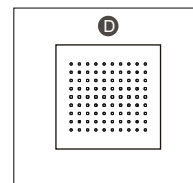
Inside the room

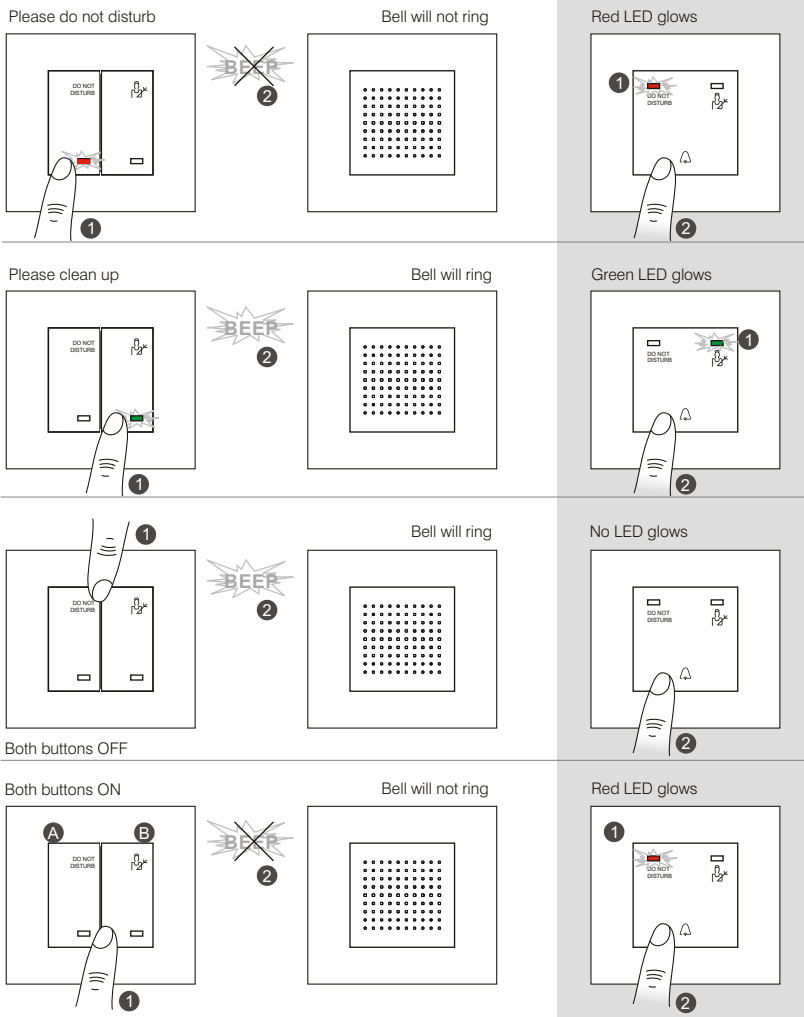


Outside the room



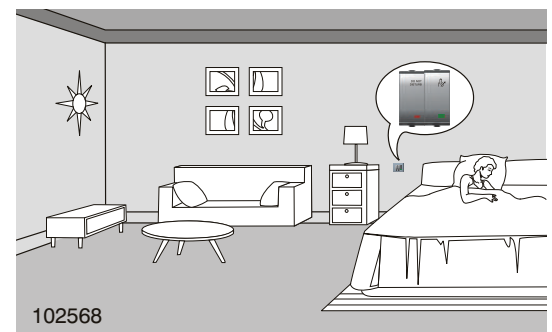
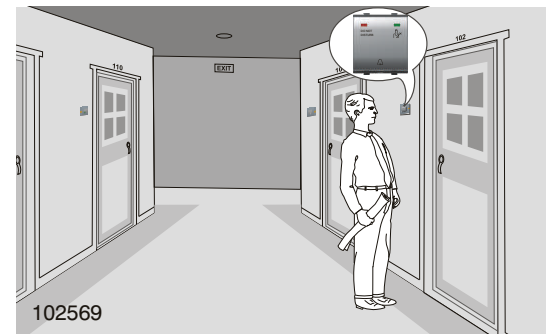
Bell, inside the room





Note: If both buttons are pressed simultaneously, priority is given to DND

Example of use



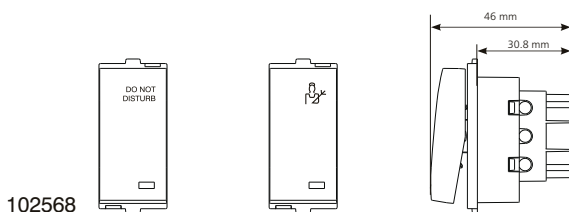
⚠ Safety Instructions

- Electrical equipment must be installed and fitted by a qualified electrician only.
- The electronic switches are single pole switches and disconnect only one pole when they are OFF.
- To prevent electric shock, disconnect both the poles of the main supply, before working on the appliance.
- Failure to observe any of the installation instructions may result in fire and other safety hazards.

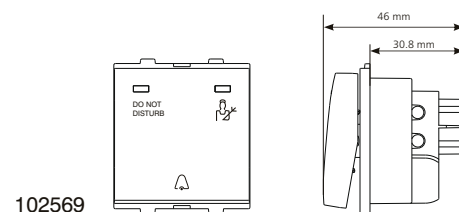
Warranty

All electronic devices are warranted against manufacturing defects for two years from the date of purchase. In the event of defects, Goldmedal will repair or, at its discretion, replace the warranted product if delivered to a Goldmedal authorized dealer along with a duly stamped guarantee card or sales receipt that shows the date of purchase along with the serial no. of the product. This warranty excludes defects due to abnormal load, abuse, or failure to use the product in accordance with the instructions. Goldmedal shall not be liable for any other damages, whether incidental, consequential or otherwise.

Dimensions (mm) Side view shows overall dimensions & flush depth.



102568



102569

GOLDMEDAL ELECTRICALS PVT. LTD.
 Bldg. No. 2, Shripal Industrial Estate, Valliv Road, Vasai East, Thane - 401208, Maharashtra, India.
 For more details, email us at info@goldmedalindia.com www.goldmedalindia.com

Customer Care Toll Free No.
1800 209 0234

© Copyright 2003 by Goldmedal Unless otherwise specified, the products illustrated in this Leaflet have been designed by Goldmedal and are covered by one or more international patents.

