

RF WIRELESS SYSTEMS

| Instruction Sheet

Technical Characteristics

i-Touch Universal Switch (2M)

The i-Touch Universal Switch can be used in combination with any Goldmedal RF device (RF Touch/ i-Touch/i-Feel Switches, Fan Regulators, Dimmers, etc.) to function as a wireless two-way or three-way switch in both commercial and residential premises. Because it is a wireless connection, the i-Touch Universal Switch works as a single-button, fixed remote. The device can also be used to activate Scenes or the All ON or All OFF command. Super luxurious in appearance, the LED backlight makes it easier and convenient to operate the device in the dark.

Technical Specifications

- Rated voltage: 160-264V AC 50Hz
- Radio frequency: 433.92 MHz Rx/Tx
- Power consumption in standby mode: 0.3W
- Humidity range: between 10-50 degree centigrade – 95% RH
- Service life: over 50,000 operations
- Suitable for mounting on inflammable surface ▽
- Impact protection: IK02
- Class two appliance □
- Operating Distance: 75m in open air.
- Size: 2 Module

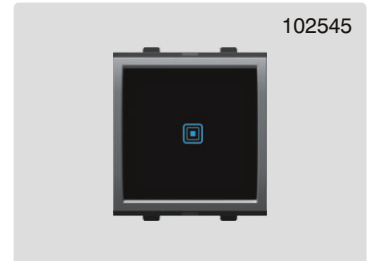
Salient features

- Obstruction free RF control.
- Designed with SMPS for improved reliability over current and over voltage protection.
- Operates by feather touch
- Equipped with LED backlight for convenience in the dark.
- Simple retrofit installation. Does not require any special wiring.
- Beep sound for feedback during operation.
- Used for operating electrical appliances in combination with RF touch, i-Touch, i-Feel devices.

Operations

Universal Switch can be used :

- a) to operate Goldmedal RF devices wirelessly (remotely) as a two-way or three-way switch.
- b) to activate any one of the 8 scenes.
- c) to activate All ON or All OFF command.



Enabling various operations using the Universal Switch

Two-Way or Three-Way function

In case you want to control a Goldmedal RF device with Universal Switch, you need to first pair the RF device with the Universal Switch in the following manner:

Two way function -

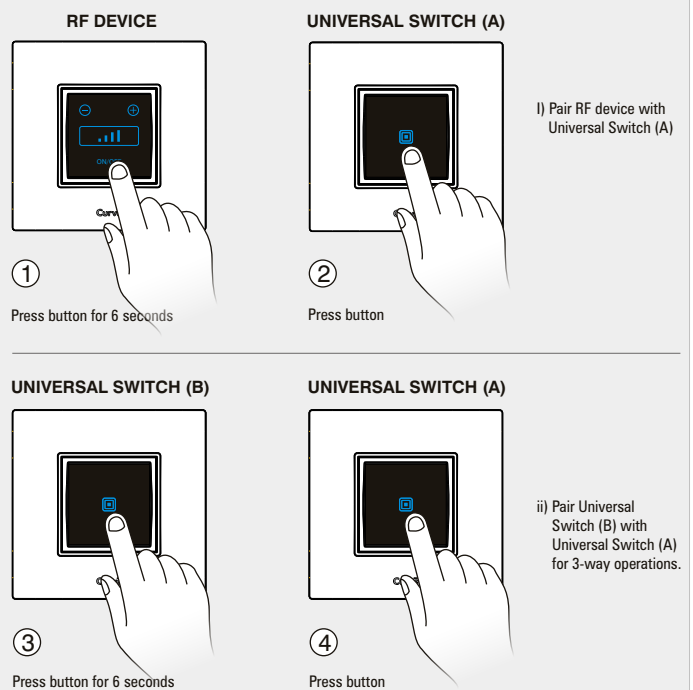
1. Press the respective button on the RF device for 6 seconds until it enters pairing mode with its LED blinking.
2. Then press the button on the Universal Switch (A). The RF device responds with a beep to indicate successful pairing. The RF device can be operated with this Universal Switch.

Three way function -

If you want to operate a Goldmedal RF device with two Universal Switches (3-way function), first pair the RF device with the first Universal Switch (A) as shown above. Then do the following:

3. Press the button on the second Universal Switch (B) for 6 seconds until it enters pairing mode with its LED blinking.
4. Now press the button on the first Universal Switch (A). The RF device now can be operated by 2 universal switches (A & B).

The Goldmedal RF device can be operated with both the Universal Switch. Any light, fan or electrical appliance that is controlled by a Goldmedal RF Switch can now also be operated by using the Universal Switches.

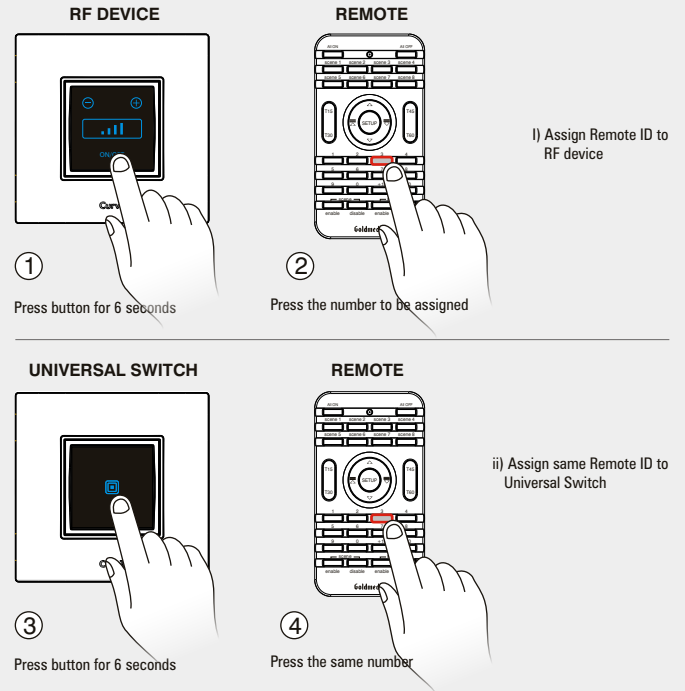


Control RF device with Universal Switch and RF Remote Control

In case you want to control a Goldmedal RF device with both, a Universal Switch as well as a Goldmedal Remote Control, you need to do the following:

1. Press the respective button on the RF device for 6 seconds until it enters pairing mode
2. Then press the number that you want to assign on the RF Remote Control. (If the RF device is already paired with the Remote Control, skip steps no. 1 & 2)
3. Now press the Universal Switch for 6 seconds until it enters pairing mode.
4. Then press the same number that was assigned to the RF Device on this RF Remote.

This ensures that the Goldmedal RF device can be operated with both the Universal Switch as well as the RF Remote Control.

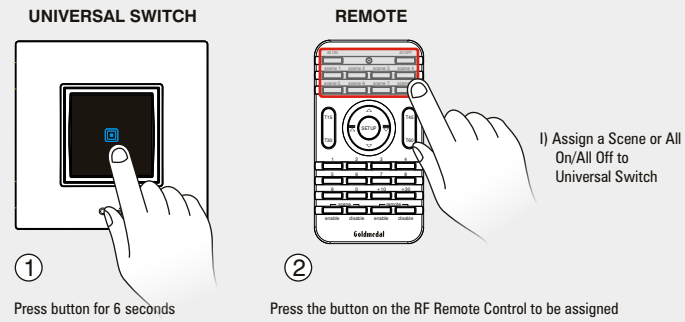


Activate Scene or All On / All Off function on Universal Switch

In case you want to activate any scene or ALL ON or ALL OFF function with the universal Switch, do the following:

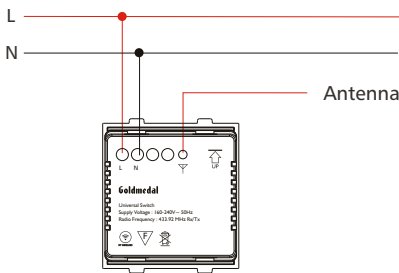
1. Press the button on the Universal Switch for 6 seconds until it enters pairing mode.
2. Then press the desired scene button OR All on OR All off button on the remote control.

The scene or All ON or all OFF can now be activated with the Universal Switch.



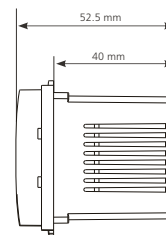
Memory Clear Function: If you want to erase the configuration done on a Universal Switch, press the button on the Universal Switch for around 15 seconds. The LED on the Universal Switch will blink for a few seconds with a triple beep.

Wiring Diagram



102545

Dimensions (mm) Side view shows overall dimensions & flush depth.



GOLDMEDAL ELECTRICALS PVT. LTD.
Bldg. No. 2, Shripal Industrial Estate, Valliv Road, Vasai East, Thane - 401208, Maharashtra, India.
For more details, email us at info@goldmedalindia.com www.goldmedalindia.com

Customer Care Toll Free No.
1800 209 0234

© Copyright 2003 by Goldmedal Unless otherwise specified, the products illustrated in this Leaflet have been designed by Goldmedal and are covered by one or more international patents.

